

 Reboot the Future

2023 2024 INTERACTIVE

Classroom Calendar

Click on an event day to find out more about it, including how to approach it, how to start a conversation about it, and related resources.

This 2023–24 Classroom Calendar is produced by Reboot the Future – a non-profit working for a sustainable and equitable future for all.

Reboot the Future also host an online resource hub, Global Dimension,

which supports teachers and educators with resources to bring global connection, conversation, and compassion to your classroom.

For hundreds of teaching resources from the UK's top sustainability and global learning organisations, as well as articles, events, and inspiration to support your teaching, visit www.globaldimension.org.uk and sign up to our **newsletter**.



September

2023

1st FRIDAY

2nd SATURDAY

3rd SUNDAY

4th MONDAY

5th TUESDAY
International Day of Charity

6th WEDNESDAY

7th THURSDAY

8th FRIDAY
International Literacy Day
Today, 87% of the world's population can read, however in 1900 it was only 20%. Why is it important that everyone can read? What does reading enable us to do?

9th SATURDAY

10th SUNDAY
World First Aid Day

11th MONDAY

12th TUESDAY

13th WEDNESDAY

14th THURSDAY

15th FRIDAY
International Day of Democracy

16th SATURDAY
International Day for the Preservation of the Ozone Layer

17th SUNDAY



18th MONDAY

19th TUESDAY

20th WEDNESDAY

21st THURSDAY
International Day of Peace

We can be at peace with ourselves, with others and also with the planet. Can you think of other ways we can be at peace?

World Gratitude Day

22nd FRIDAY

23rd SATURDAY

24th SUNDAY
Yom Kippur begins

Yom Kippur is a time of reflection for Jewish people. Being reflective helps us understand the effect we're having on the people and planet around us. How can we tell if we're having a good effect on others?

25th MONDAY
Yom Kippur

26th TUESDAY
European Day of Languages

Learning different languages helps us to see the world from different perspectives. See if you can learn a phrase from a new language today!

27th WEDNESDAY
World Tourism Day

28th THURSDAY
World Maritime Day

Did you know that 80% of all global trade involves ships sailing over the oceans? That's a lot of ships! Imagine a computer travelling from China or an avocado from Peru. What does your journey look like? How many people does it pass through? How much energy is used?

29th FRIDAY

30th SATURDAY

October

2023

1 st SUNDAY	<p>Black History Month</p> <p>Black History Month exists to celebrate and honour the part that Black people have played across history. Why do you think there is a specific month dedicated to this? How can we make sure that the role of Black people is honoured and celebrated throughout the year, and not just for one month?</p> <p>International Day of Older Persons</p>
2 nd MONDAY	<p>International Day of Non-Violence (on the birthday of Mahatma Gandhi)</p> <p>World Habitat Day</p>
3 rd TUESDAY	
4 th WEDNESDAY	<p>World Animal Day</p> <p>All animals, including humans, live in ecosystems where our actions affect one another. How can we act as good neighbours to other animals?</p> <p>World Space Week begins</p> <p>The universe is vast and it has existed for billions of years. When you think about all that is out there in the universe, how does it make you feel about your own life on Earth? What do you think is special about Earth, our planet?</p>
5 th THURSDAY	<p>World Teachers' Day</p> <p>World Space Week</p>
6 th FRIDAY	<p>World Space Week</p>
7 th SATURDAY	<p>World Space Week</p>
8 th SUNDAY	<p>World Space Week</p>

9 th MONDAY	<p>World Space Week</p>
10 th TUESDAY	<p>World Mental Health Day</p> <p>Can you remember a time when you were feeling down and someone helped to make you feel better? What did they do? How can you do the same for others?</p> <p>World Space Week</p>
11 th WEDNESDAY	<p>International Day of the Girl Child</p>
12 th THURSDAY	<p>World Sight Day</p>
13 th FRIDAY	<p>Natural Disaster Reduction Day</p>
14 th SATURDAY	
15 th SUNDAY	<p>International Day of Rural Women</p> <p>Sharad Navratri begins (Hindu 9-night festival)</p>
16 th MONDAY	<p>World Food Day</p> <p>The food we eat accounts for 30% of all our carbon emissions. Can you think of one way to make greener food choices?</p> <p>Sharad Navratri</p>
17 th TUESDAY	<p>International Day for the Eradication of Poverty</p> <p>Sharad Navratri</p>
18 th WEDNESDAY	<p>Anti-Slavery Day</p> <p>Sharad Navratri</p>
19 th THURSDAY	<p>Sharad Navratri</p>
20 th FRIDAY	<p>Sharad Navratri</p>
21 st SATURDAY	<p>Sharad Navratri</p>
22 nd SUNDAY	<p>Sharad Navratri</p>

23 rd MONDAY	<p>Sharad Navratri</p>
24 th TUESDAY	<p>United Nations Day</p> <p>The United Nations is where most of the world's countries come together to discuss global issues. What would you say if you knew most of the world was listening to you?</p> <p>Sharad Navratri</p>
25 th WEDNESDAY	
26 th THURSDAY	
27 th FRIDAY	
28 th SATURDAY	
29 th SUNDAY	
30 th MONDAY	
31 st TUESDAY	<p>World Cities Day</p> <p>Halloween</p> <p>Lots of people buy costumes and props for Halloween. Many of these things have come from factories far away and often they are used for one night then thrown away. We can make costumes and props by recycling the things we have now. Can you think of any reasons why this is better? Why does it matter?</p>



November

2023

1 st	WEDNESDAY
2 nd	THURSDAY Day of the Dead in Mexico National Stress Awareness Day
3 rd	FRIDAY
4 th	SATURDAY
5 th	SUNDAY Guy Fawkes Night
6 th	MONDAY
7 th	TUESDAY
8 th	WEDNESDAY
9 th	THURSDAY
10 th	FRIDAY World Science Day for Peace and Development Scientists have made discoveries that have saved and improved many lives. How many examples can you think of?
11 th	SATURDAY Remembrance Day
12 th	SUNDAY Diwali (Festival of Lights) Inter-Faith Week begins
13 th	MONDAY Inter-Faith Week
14 th	TUESDAY Inter-Faith Week
15 th	WEDNESDAY Inter-Faith Week



16th THURSDAY

International Day of Tolerance

Tolerance is the acceptance and celebration of difference. There will always be people who we disagree with. Why is it important to understand different perspectives?

World Philosophy Day

Inter-Faith Week

17th FRIDAY

Inter-Faith Week

18th SATURDAY

Global Entrepreneurship Week begins

Businesses have the power to improve our society and environment. If you could start one business that helps to make the world a better place, what would it be?

Inter-Faith Week

19th SUNDAY

World Toilet Day

Global Entrepreneurship Week
Inter-Faith Week

20th MONDAY

World Children's Day

Name a country far away from your own. What do you think life is like for the children who live there? What are the similarities and differences between their lives and yours?

Global Entrepreneurship Week

20th MONDAY

Global Education Week begins

21st TUESDAY

Global Entrepreneurship Week
Global Education Week

22nd WEDNESDAY

Global Entrepreneurship Week
Global Education Week

23rd THURSDAY

Global Entrepreneurship Week
Global Education Week

24th FRIDAY

International Buy Nothing Day (Anti Black Friday)

Have you ever bought something that you've only used once? When we buy too much stuff it wastes unnecessary energy and creates too much rubbish. Today is the day to celebrate buying nothing and being happy with what we already have.

Global Entrepreneurship Week
Global Education Week

25th SATURDAY

Global Education Week

26th SUNDAY

Global Education Week

27th MONDAY

28th TUESDAY

29th WEDNESDAY

30th THURSDAY

Remembrance Day for Lost Species

30th THURSDAY

COP28 begins

Can you think of one way that climate change is affecting people around the world today? How about in 50 years? What about 100?

December

2023

1st FRIDAY

Antarctica Day

The Festive Period begins

Some find the festive period to be one of the most wonderful times of the year, whilst others find it tough. How can we make the festive period supportive and positive for everyone?

COP28

2nd SATURDAY

International Day for the Abolition of Slavery

COP28



3rd SUNDAY

International Day of Persons With Disabilities

Everyone has different levels of sight, mobility and ways of learning, but a lot of our public spaces are designed without thinking about the needs of everyone. What changes in your school or community could make it more accessible to more people?

COP28

4th MONDAY

COP28

5th TUESDAY

World Soil Day

International Volunteer Day

We can all volunteer our time, skills or ideas and we can help to solve the problems we care about the most. If you could volunteer to help solve any problem, what would it be?

COP28

6th WEDNESDAY

COP28

7th THURSDAY

Hanukkah begins

COP28

8th FRIDAY

Hanukkah

COP28

9th SATURDAY

Hanukkah

COP28

10th SUNDAY

Human Rights Day

Hanukkah

COP28

11th MONDAY

International Mountain Day

Mountains are a hugely important type of ecosystem that provide freshwater for half of humanity. Have you ever walked up a mountain? How did it make you feel?

Hanukkah

COP28

12th TUESDAY

Hanukkah

COP28

13th WEDNESDAY

Hanukkah

14th THURSDAY

Hanukkah

15th FRIDAY

Hanukkah

16th SATURDAY

17th SUNDAY

18th MONDAY

International Migrants Day

19th TUESDAY

20th WEDNESDAY

International Human Solidarity Day

Solidarity is when we feel we have shared interests with other people, and act together to solve our shared problems. What do all people have in common? What problems do we share, and how can we work together to solve them?

21st THURSDAY

22nd FRIDAY

Winter Solstice

23rd SATURDAY

24th SUNDAY

25th MONDAY

Christmas Day

26th TUESDAY

27th WEDNESDAY

28th THURSDAY

29th FRIDAY

30th SATURDAY

31st SUNDAY

New Year's Eve

January

2024

1 st	MONDAY New Year's Day
2 nd	TUESDAY
3 rd	WEDNESDAY
4 th	THURSDAY World Braille Day Braille is the ingenious writing system developed so that blind people can read. Braille was invented in 1824 by the 15 year old boy Louis Braille. If you could invent anything to help make the world a better place what would it be?
5 th	FRIDAY
6 th	SATURDAY
7 th	SUNDAY
8 th	MONDAY
9 th	TUESDAY
10 th	WEDNESDAY
11 th	THURSDAY
12 th	FRIDAY
13 th	SATURDAY
14 th	SUNDAY
15 th	MONDAY
16 th	TUESDAY Martin Luther King Jr. Day One of Martin Luther King's most famous speeches is known as the "I have a dream" speech, where he describes the future he wants to see - filled with racial equality, justice, hope, and freedom for everyone. What is your dream for our future?

17 th	WEDNESDAY
18 th	THURSDAY
19 th	FRIDAY
20 th	SATURDAY
21 st	SUNDAY
22 nd	MONDAY
23 rd	TUESDAY
24 th	WEDNESDAY International Day of Education
25 th	THURSDAY Burns Night This day celebrates the great Scottish Poet Robert Burns. Burns is famous for writing poetry in the Scots language, a language still spoken by some Scottish people. What is the benefit of protecting less-spoken languages?
26 th	FRIDAY
27 th	SATURDAY Holocaust Memorial Day During World War Two, Nazis killed millions of Jewish People, Roma Gypsies, gay people and disabled people. Today we remember all those who were lost and remind ourselves that it should never happen again.
28 th	SUNDAY
29 th	MONDAY
30 th	TUESDAY
31 st	WEDNESDAY



February

2024

1st THURSDAY

LGBT History Month

LGBTQ+ people have existed throughout history. See if you can research a historical figure that was LGBTQ+ today. How were they treated compared to you?

World Interfaith Harmony Week begins

2nd FRIDAY

World Wetlands Day

Did you know that 40% of the world's plants and animals depend on wetlands? From marshes to mangrove forests, these places store masses of carbon, protect against flooding and are some of the most biodiverse places in the world.

[World Interfaith Harmony Week](#)

3rd SATURDAY

[World Interfaith Harmony Week](#)

4th SUNDAY

Children's Mental Health Awareness Week begins

Looking after our mental health is as important as looking after our physical health. Can you think of any connections between food and mental health? Are there other ways you can look after your mental health?

[Children's Mental Health Awareness Week](#)
[World Interfaith Harmony Week](#)

5th MONDAY

[Children's Mental Health Awareness Week](#)
[World Interfaith Harmony Week](#)

6th TUESDAY

[Children's Mental Health Awareness Week](#)
[World Interfaith Harmony Week](#)

7th WEDNESDAY

[Children's Mental Health Awareness Week](#)
[World Interfaith Harmony Week](#)



8th THURSDAY

[Children's Mental Health Awareness Week](#)

9th FRIDAY

[Children's Mental Health Awareness Week](#)

10th SATURDAY

Chinese New Year

[Children's Mental Health Awareness Week](#)

11th SUNDAY

[Children's Mental Health Awareness Week](#)

12th MONDAY

Red Hand Day for Child Soldiers

13th TUESDAY

14th WEDNESDAY

Valentine's Day

Valentine's Day doesn't just have to be about romantic relationships. What other kinds of relationships can you think of?

15th THURSDAY

16th FRIDAY

17th SATURDAY

Random Acts of Kindness Day

18th SUNDAY

19th MONDAY

20th TUESDAY

World Day of Social Justice

Social justice is about people having access to all the opportunities, services, and resources they need. In what ways could the world be more socially just?

21st WEDNESDAY

International Mother Language Day

22nd THURSDAY

23rd FRIDAY

24th SATURDAY

25th SUNDAY

26th MONDAY

Empathy Week begins

27th TUESDAY

[Empathy Week](#)

28th WEDNESDAY

[Empathy Week](#)

29th THURSDAY

[Empathy Week](#)

March

2024

1st FRIDAY
Zero Discrimination Day
St David's Day
 Empathy Week

2nd SATURDAY

3rd SUNDAY
World Wildlife Day
 100 years ago there were only 450 Humpback Whales left, now there's over 25,000! Thanks to global conservation efforts, these peaceful giants are still with us today. It's amazing what we can do if we all get together and treat our planet with respect. But there's more work to do. Which animal would you like to protect the most and why?

4th MONDAY
Fairtrade Fortnight begins

5th TUESDAY
 Fairtrade Fortnight

6th WEDNESDAY
 Fairtrade Fortnight

7th THURSDAY
World Book Day
 Fairtrade Fortnight

8th FRIDAY
International Women's Day
 Only 3 countries have governments that are not male dominated: Rwanda, Cuba, and Bolivia. What are the problems with having a government that only represents one gender?
 Fairtrade Fortnight

9th SATURDAY
 Fairtrade Fortnight

10th SUNDAY
Mother's Day
 Fairtrade Fortnight

11th MONDAY
Commonwealth Day
 Fairtrade Fortnight

11th MONDAY
Ramadan begins

12th TUESDAY
 Ramadan
 Fairtrade Fortnight

13th WEDNESDAY
 Ramadan
 Fairtrade Fortnight

14th THURSDAY
International School Meals Day
 Ramadan
 Fairtrade Fortnight

15th FRIDAY
 Ramadan
 Fairtrade Fortnight

16th SATURDAY
 Ramadan
 Fairtrade Fortnight

17th SUNDAY
St Patrick's Day
 Ramadan
 Fairtrade Fortnight

18th MONDAY
 Ramadan

19th TUESDAY
 Ramadan

20th WEDNESDAY
International Day of Happiness
 Ramadan

21st THURSDAY
International Day of Forests
 Forests are home to 300 million people and 80% of the Earth's land-based biodiversity. This means forests can absorb large amounts of greenhouse gases and even create their own weather! What's your favourite forest?

International Day for the Elimination of Racial Discrimination
World Poetry Day
 Ramadan

22nd FRIDAY
World Water Day
 As well as preventing 1.2 million deaths a year, access to clean water also improves gender equality. This is because 75% of the people forced to walk long distances for water are girls and women. What other positive effects can access to clean water have?
 Ramadan

23rd SATURDAY
World Meteorological Day
 Ramadan

24th SUNDAY
 Ramadan

25th MONDAY
Holi
 Ramadan

26th TUESDAY
 Ramadan

27th WEDNESDAY
 Ramadan

28th THURSDAY
 Ramadan

29th FRIDAY
Good Friday
 Ramadan

30th SATURDAY
 Ramadan

31st SUNDAY
International Transgender Day of Visibility
Easter Sunday
 Ramadan

April

2024



1 st	MONDAY Ramadan
2 nd	TUESDAY International Children's Book Day Ramadan
3 rd	WEDNESDAY Ramadan
4 th	THURSDAY Ramadan
5 th	FRIDAY International Golden Rule Day The Golden Rule is: 'treat others and the planet as you would wish to be treated'. In order to treat others better we must first put ourselves in their shoes. This is called empathy - who was the last person you empathised with? Ramadan

6 th	SATURDAY Ramadan
7 th	SUNDAY World Health Day Ramadan
8 th	MONDAY Eid-ul-Fitr begins Ramadan
9 th	TUESDAY Eid-ul-Fitr Ramadan
10 th	WEDNESDAY
11 th	THURSDAY
12 th	FRIDAY International Day for Street Children Street children are just like any other children that have found themselves in difficult circumstances. Often they have no home to go to, or have to beg to make money. Governments don't seem to treat them with the same care as children with homes. Why do you think that is? How could we make these children's lives better?
13 th	SATURDAY Vaisakhi (Sikh New Year) Vaisakhi is a day celebrated around the world by both Hindus and Sikhs. For many different people this is a day that celebrates the new solar year. Can you think of other examples where different communities share the same celebration day?
14 th	SUNDAY
15 th	MONDAY
16 th	TUESDAY
17 th	WEDNESDAY
18 th	THURSDAY World Heritage Day
19 th	FRIDAY
20 th	SATURDAY

21 st	SUNDAY
22 nd	MONDAY International Earth Day
22 nd	MONDAY Fashion Revolution Week begins Fast fashion is when clothes are produced cheaply so that shops on the high street can sell things at very low prices. To keep prices low, workers are often paid badly, and factories often pollute the environment. How can we solve this problem? Pesach/Passover begins The Haggadah tells the story of how the ancient Israelites were freed from slavery in Egypt. Jewish people today still gather to remember this key moment in their collective history. What do you know about the history of your family or culture?
23 rd	TUESDAY St George's Day Fashion Revolution Week Pesach/Passover
24 th	WEDNESDAY Fashion Revolution Week Pesach/Passover
25 th	THURSDAY World Malaria Day Fashion Revolution Week Pesach/Passover
26 th	FRIDAY Fashion Revolution Week Pesach/Passover
27 th	SATURDAY Fashion Revolution Week Pesach/Passover
28 th	SUNDAY Fashion Revolution Week Pesach/Passover
29 th	MONDAY Pesach/Passover
30 th	TUESDAY

May

2024

1st WEDNESDAY

International Worker's Day
May Day

2nd THURSDAY3rd FRIDAY

World Press Freedom Day

Journalists often write news stories that expose the bad things organisations or governments have done. Why is it important journalists are allowed to speak freely?

4th SATURDAY5th SUNDAY

African World Heritage Day

6th MONDAY7th TUESDAY8th WEDNESDAY

Red Cross and Red Crescent Day

Henry Dunant founded the Red Cross to help wounded soldiers. From just one concerned man a movement of over 97 million volunteers was born. Everyone is capable of starting something like Dunant. What are you inspired to do today to make a difference?

9th THURSDAY

Europe Day

10th FRIDAY11th SATURDAY

World Migratory Bird Day

A migratory bird is one that travels to different parts of the world at different times of year. Many birds come from Africa to the UK every year. What's the longest bird migration route you can find?

World Fair Trade Day

12th SUNDAY13th MONDAY

Mental Health Awareness Week begins

14th TUESDAY

Mental Health Awareness Week

15th WEDNESDAY

International Conscientious Objector Day

International Day of Families

Mental Health Awareness Week

16th THURSDAY

Mental Health Awareness Week

17th FRIDAY

International Day against Homophobia, Transphobia and Biphobia

Mental Health Awareness Week

18th SATURDAY

Mental Health Awareness Week

19th SUNDAY

Mental Health Awareness Week

20th MONDAY

Mental Health Awareness Week

21st TUESDAY

World Day for Cultural Diversity

'Culture' takes many forms - from different foods, arts and buildings to different greetings, festivals and philosophies. Can you think of an example of food, art or music that brings together a mixture of different cultures?

22nd WEDNESDAY

International Day of Biological Diversity

Vesak/Buddha's Birthday

23rd THURSDAY24th FRIDAY25th SATURDAY

Africa Day

Africa is a continent of over a billion people living in 54 countries. On this day, African people celebrate the African Union, an organisation where Africans work together for the common good of Africa.

26th SUNDAY27th MONDAY28th TUESDAY29th WEDNESDAY30th THURSDAY31st FRIDAY

June

2024

1 st	SATURDAY	<p>World Reef Day</p> <p>Pride Month begins</p> <p>Gypsy, Roma and Traveller History Month</p> <p>Gypsy, Roma and Traveller people are communities that traditionally move between different places, rather than living in one location. It is thought that the Roma once came from Northern India a thousand years ago. Did you know that the word 'lollipop' comes from the Roma language? See if you can find another Romani word!</p> <p>The Big Lunch</p>
2 nd	SUNDAY	<p>The Big Lunch</p>
3 rd	MONDAY	<p>World Bicycle Day</p>
4 th	TUESDAY	
5 th	WEDNESDAY	<p>World Environment Day</p>
6 th	THURSDAY	
7 th	FRIDAY	
8 th	SATURDAY	<p>World Oceans Day</p> <p>Did you know that 94% of all the Earth's plants and animals live in the sea? Even though the oceans are so large, they are being damaged by the way we live our lives. If the oceans could talk, what do you think they would ask us to do?</p>
9 th	SUNDAY	
10 th	MONDAY	
11 th	TUESDAY	

12 th	WEDNESDAY	<p>World Day Against Child Labour</p>
13 th	THURSDAY	
14 th	FRIDAY	
15 th	SATURDAY	
16 th	SUNDAY	<p>International Day of the African Child</p> <p>Father's Day</p> <p>World Refill Day</p>
17 th	MONDAY	<p>World Day to Combat Desertification and Drought</p> <p>The Great Green Wall is a long wall of trees and farmland being built across the middle of Africa to stop the Sahara desert from expanding. It is intended to provide jobs, food and water to millions of people. What else could we build or change to improve our environment?</p> <p>Refugee Week begins</p>
18 th	TUESDAY	<p>Refugee Week</p>
19 th	WEDNESDAY	<p>Refugee Week</p>
20 th	THURSDAY	<p>Clean Air Day</p> <p>World Refugee Day</p> <p>Summer Solstice</p> <p>Summer solstice is the celebration of the longest day of the year. It has been celebrated for thousands of years all over the world. Ancient people used this day to mark the turning of the seasons. At what time of year do you feel most connected to nature? Why?</p> <p>Refugee Week</p>
21 st	FRIDAY	<p>World Music Day</p> <p>Refugee Week</p>
22 nd	SATURDAY	<p>Refugee Week</p>
23 rd	SUNDAY	<p>Refugee Week</p>



24 th	MONDAY	
25 th	TUESDAY	
26 th	WEDNESDAY	
27 th	THURSDAY	
28 th	FRIDAY	<p>Matariki (Maori New Year)</p> <p>Matariki is the traditional New Year celebration of New Zealand's native people, the Maori. It follows the rise of the Matariki star cluster which the Maori use to think about the new year ahead, to remember their ancestors and to predict the weather in the months to come. What is similar and what is different to the New Year celebrated in the UK?</p>
29 th	SATURDAY	
30 th	SUNDAY	

July

2024

1st MONDAY

International Joke Day

Jokes are a great way to find out what people think about the world. People find different things funny because they have different cultures and perspectives on what the world is like. See if you can find a joke from another culture today. What's similar and what's different?

Plastic Free July begins

2nd TUESDAY

3rd WEDNESDAY

4th THURSDAY

5th FRIDAY

6th SATURDAY

International Day of Cooperatives

7th SUNDAY

8th MONDAY

9th TUESDAY

10th WEDNESDAY

11th THURSDAY

World Population Day

The world's population is growing every day. Some say we need to control population growth so that we don't run out of resources. Others say there are more than enough resources to go around, and we should focus on cutting down waste instead. Which should we change? Our resource use or the size of our population?

12th FRIDAY

13th SATURDAY

14th SUNDAY



15th MONDAY

World Youth Skills Day

16th TUESDAY

Eid-ul-Adha begins

17th WEDNESDAY

Eid-ul-Adha

18th THURSDAY

Nelson Mandela Day

Mandela once said 'It always seems impossible until it's done'. What global challenges seem impossible to you right now? How can we work together to solve them?

19th FRIDAY

20th SATURDAY

21st SUNDAY

Asalha Puja / Dharma Day

This day celebrates the Buddha's enlightenment. The Buddha was once a rich man who was dissatisfied with his life. He decided to leave all his wealth behind and went to search for a more meaningful life. What does a meaningful life look like to you?

22nd MONDAY

23rd TUESDAY

24th WEDNESDAY

25th THURSDAY

26th FRIDAY

27th SATURDAY

28th SUNDAY

29th MONDAY

30th TUESDAY

International Friendship Day

Friendship is important for a happy, healthy life. What does being a good friend teach us? What would a friendlier world look like?

31st WEDNESDAY

August

2024

1st THURSDAY2nd FRIDAY3rd SATURDAY4th SUNDAY5th MONDAY6th TUESDAY7th WEDNESDAY8th THURSDAY9th FRIDAY

International Day of the World's Indigenous People

Being 'indigenous' means having a close, long-term connection with the land you live on. Many of the people who live in the Amazon are indigenous, as are Native Americans. The world's healthiest ecosystems are often protected by indigenous people. What can we learn from the way they live?

10th SATURDAY11th SUNDAY12th MONDAY13th TUESDAY14th WEDNESDAY15th THURSDAY16th FRIDAY17th SATURDAY18th SUNDAY19th MONDAY

World Humanitarian Day

A humanitarian is someone who helps others in times of hardship. This includes disaster-relief, helping refugees and running free food programs. How would you like to help others?

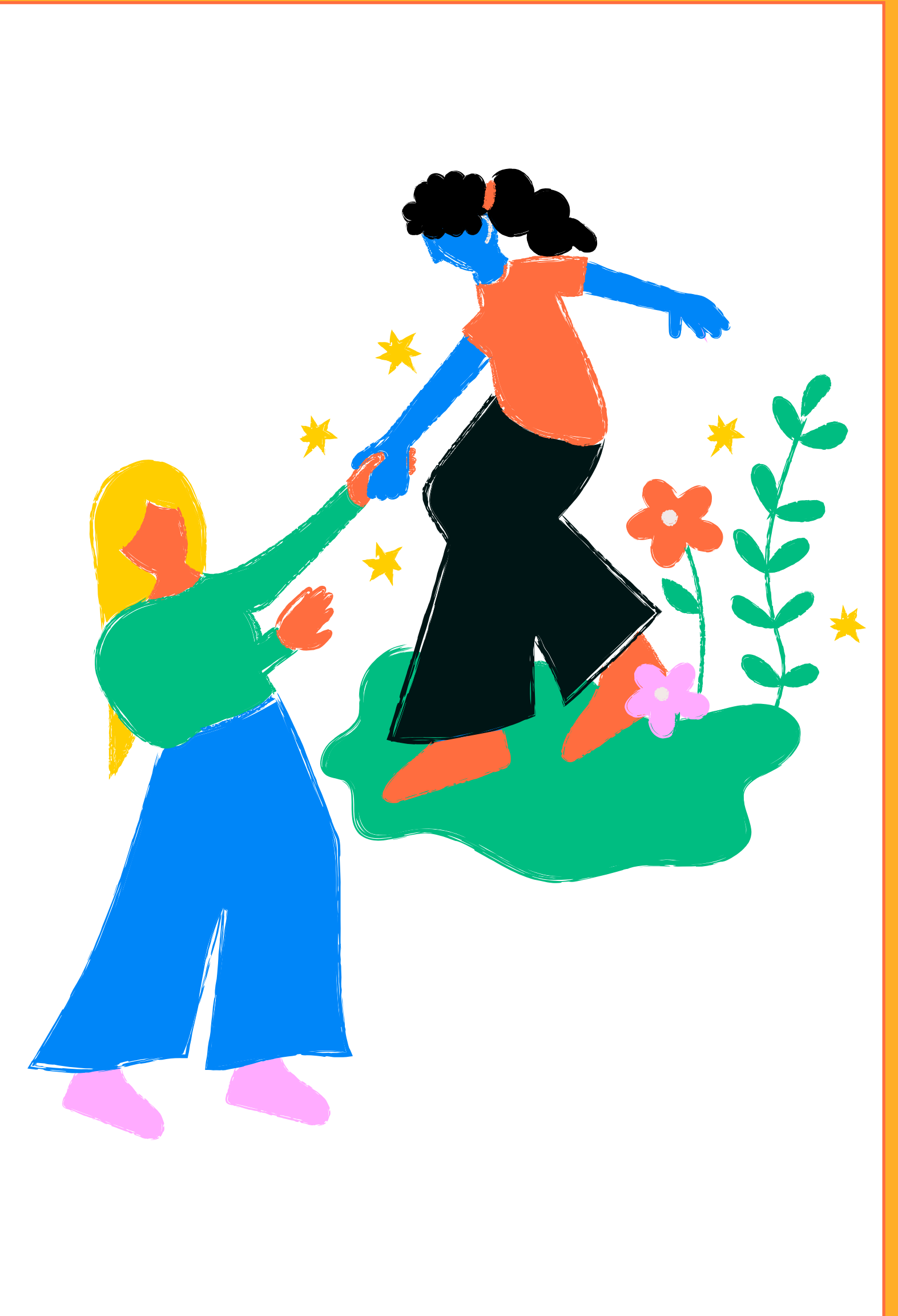
20th TUESDAY21st WEDNESDAY22nd THURSDAY23rd FRIDAY


International Day for the Remembrance of the Slave Trade and its Abolition

It's often mistakenly claimed that Britain was the first country to abolish transatlantic slavery. Actually, Haiti was the first country to do this. The slaves of Haiti rebelled against their masters and established a state for themselves, free from slavery, in 1804. Why do you think this fact is overlooked?


24th SATURDAY25th SUNDAY26th MONDAY27th TUESDAY28th WEDNESDAY29th THURSDAY

International Day Against Nuclear Tests

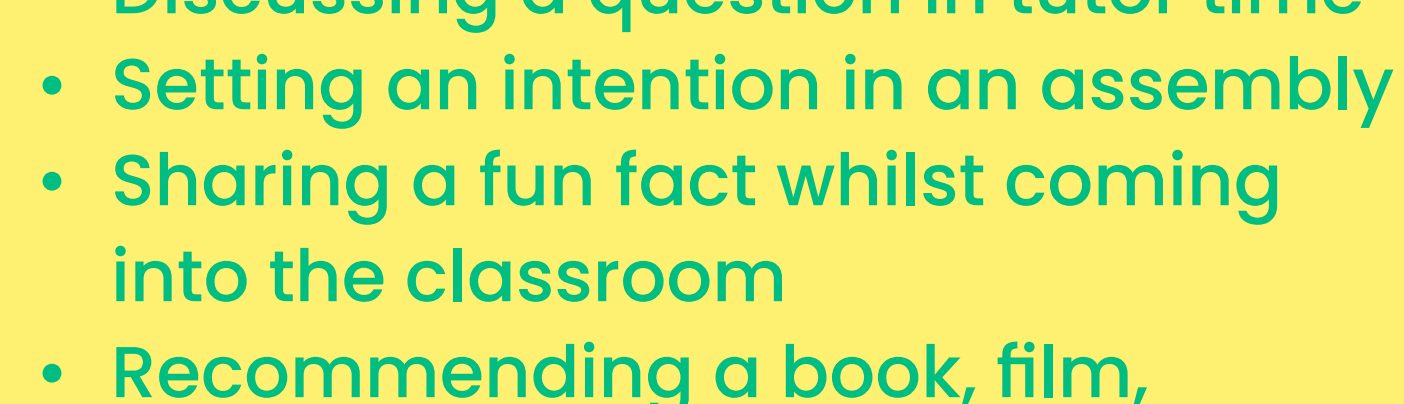
30th FRIDAY31st SATURDAY

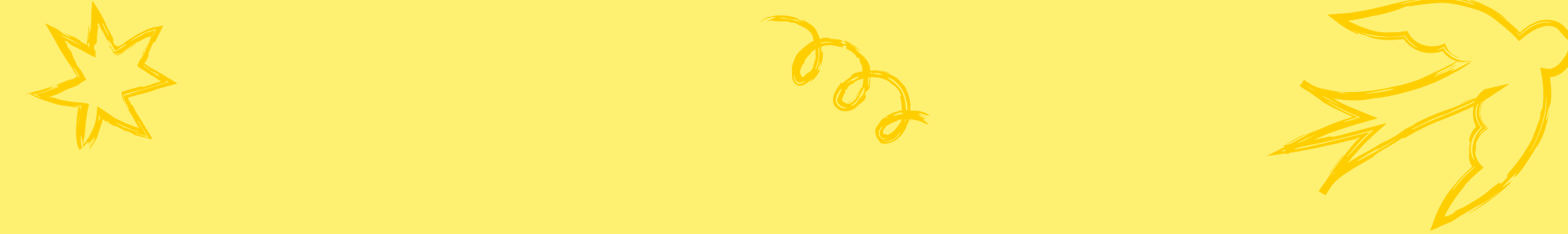


We know it can be hard to find the time to talk about the topics that really matter. Important and current issues like climate change, the energy crisis, peace, and mental wellbeing can feel big and overwhelming but often have only the smallest space allocated to them in the school curriculum.




But we have many moments in the day to develop a sense of connection, compassion, and curiosity. These 'micro moments', although small, can have a big impact. Some good micro moment opportunities are:


- 
- Discussing a question in tutor time
 - Setting an intention in an assembly
 - Sharing a fun fact whilst coming into the classroom
 - Recommending a book, film, or podcast in the playground



These are just some examples of how you could get creative with fostering empathy for other people and the planet, making connections between cultures, discussing positive change and checking in on wellbeing in your school day.



We've developed this classroom calendar to help you create these wonderful moments every day, with global event days that draw attention to specific issues and questions aimed to expand understanding and conversation. Using days like Refugee Week, World Poetry Day, or Earth Day, can be a simple jumping off point to get the conversation rolling.



With easy access to everything you need, use our digital classroom calendar for quick links, resources and full event day guides.